

TRINITY FIRE TUBE

High Efficiency Condensing Boiler

Stainless steel down-fired
Fire Tube design

Nine models from
60,000 to 399,000 BTU/Hr

Full modulation up to
10:1 turndown

95% AFUE

Advanced Sola Controller
and **ifLEX** Interface

Venting to 150'

2" venting on three models



ntiboilers.com

INNOVATION AS SOLID AS STEEL

Down-fired Fire Tube

The Trinity Fire Tube (Tft) heat exchanger is ASME certified and uses an innovative down-fired concept. The tubes have a dimpled design to optimize heat transfer, which increases energy efficiency. The Fire Tubes provide generous space for flue gas to pass, and significantly reduce the need for cleaning due to the vertical configuration and self-cleaning operation when in condensation mode.

Stainless steel design

The ASME certified heat exchanger is constructed using 439 stainless steel, making it extremely resistant to corrosion. The Fire Tube design allows water to flow freely around the heating surfaces of the boiler, which significantly reduces pressure drop.

Efficiencies & performance

The Tft provides AFUE efficiencies of 95%. NTI was the first to develop the totally-sealed combustion system, whereby air is not drawn from the cabinet.



Boiler Features

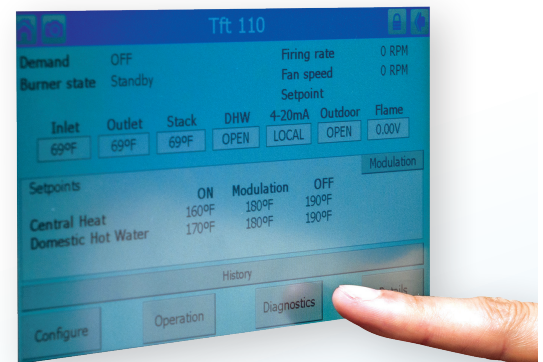
- Easy to install and maintain
- Down-fired, Fire Tube stainless steel boiler
- Stainless steel internal water piping
- Certified internal low water cut-off with test button
- Fully-modulating combustion system
- Condensate pump receptacle
- Built-in gas drip leg
- Wall-mount configuration with optional floor stand
- Improved venting orientation with flue test port
- On/off power service switch
- High-quality metallic clear coat finish
- High-energy external spark generator
- Field convertible to propane
- ASME certified boiler
- Certified ANSI Z21.13
- Limited lifetime warranty

Controller Features

- Ultimate controllability with advanced Sola Controller
- Detailed troubleshooting information (self-diagnostic display)
- Advanced operation for multiple boilers – “Lead-Lag” cascade system maximizes efficient operation
- Outdoor reset temperature operation increases boiler and system efficiency
- Ability to control three separate temperature setpoints
- Comes standard with Modbus capability
- DHW and central heat modulation limiting
- Ability to control three separate pumps
- 4-20mA heat input for setpoint or modulation control
- Freeze protection parameters
- Warm weather shutdown

ifLEX interface

The intuitive touchscreen makes for easy set-up, often taking less than a minute. Colour coding alerts users to problems and common language makes for easy troubleshooting.

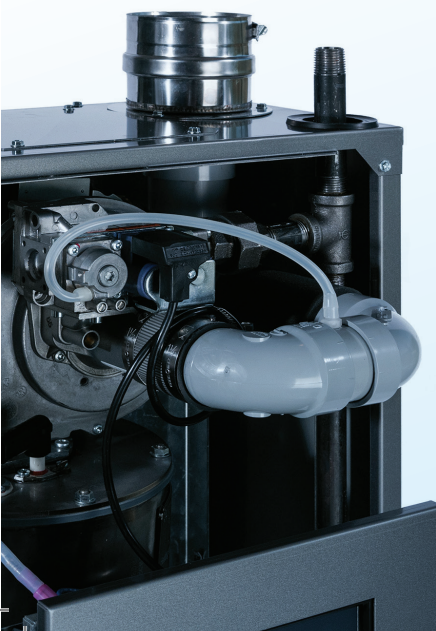


ifLEX touchscreen

The 7" colour touchscreen provides for easy programming and control. The Windows-like touchscreen allows quick setup with user-friendly screen displays and options.

Flexibility

The design of the Tft offers more flexibility than any other boiler on the market, with vent runs up to 150', five vent termination options, 2" venting on some models and plumbing and gas connections at either top or bottom.





Innovative

NY Thermal Inc. has been an industry leader providing the ultimate in features and efficiency. Our 40-year-old family business is committed to continuous product improvement. When you buy NTI, you buy the best.



Efficient

Save the planet: The Tft can reduce greenhouse gas (GHG) emissions by up to 50%, and lead to a reduction of 2.5 tons of GHGs, equivalent to two acres of, or 280, trees.

Save money: Savings of up to 40% on heating bills due to superior efficiency.

If you pay \$1,800 annually, you could save \$720 a year, or \$3,600 in five years.



Dependable

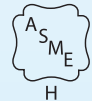
At NTI, we manufacture all of our boilers to the highest industry standards. Our in-factory Quality Control tests are the most rigorous in the industry. Every Tft boiler is factory run and calibrated for optimal performance. Our limited warranty provides you with the assurance of years of worry-free operation and our Technical Support is second-to-none in the industry.

Model	Max. Rate NG/LP (MBH)	Min. Rate NG/LP (MBH)	AFUE*	Heating Capacity (MBH)	Max. Vent Length 2" NG/LP (ft)	Max. Vent Length 3" (ft)	Max. Vent Length 4" NG/LP (ft)	Height (inches)	Width (inches)	Depth (inches)	Pipe Size (NPT) (inches)	Shipping Weight (lbs.)
Tft60	60/65	17/17.6	95	56	100/35	150	NA	33-3/8	19-3/4	14-3/4	1	128
Tft85	85/88	17/17.6	95	78								
Tft110	108/113	21.6/22.6	95	99	NA	NA	33-3/8	21-1/4	18-7/8	1-1/2	237	
Tft154	154	15.4	95	141								
Tft201	200	20	95	185								
Tft285	285	28.5	95	263	NA	100	36-5/8	25	20	1-1/2	247	
Tft340	340	39.9	95.4*	324								
Tft399	399	39.9	95.4*	380								

* AFUE does not apply to models with input rates in excess of 299MBH, ratings listed for models Tft340 and 399 are Thermal Efficiency.



NY THERMAL INC.
 30 Stonegate Drive, Saint John
 New Brunswick E2H 0A4 Canada
 Tel: 506-657-6000
 Toll-free: 800-688-2575
 Fax: 506-432-1135
ntiboilers.com



DISTRIBUTED BY: